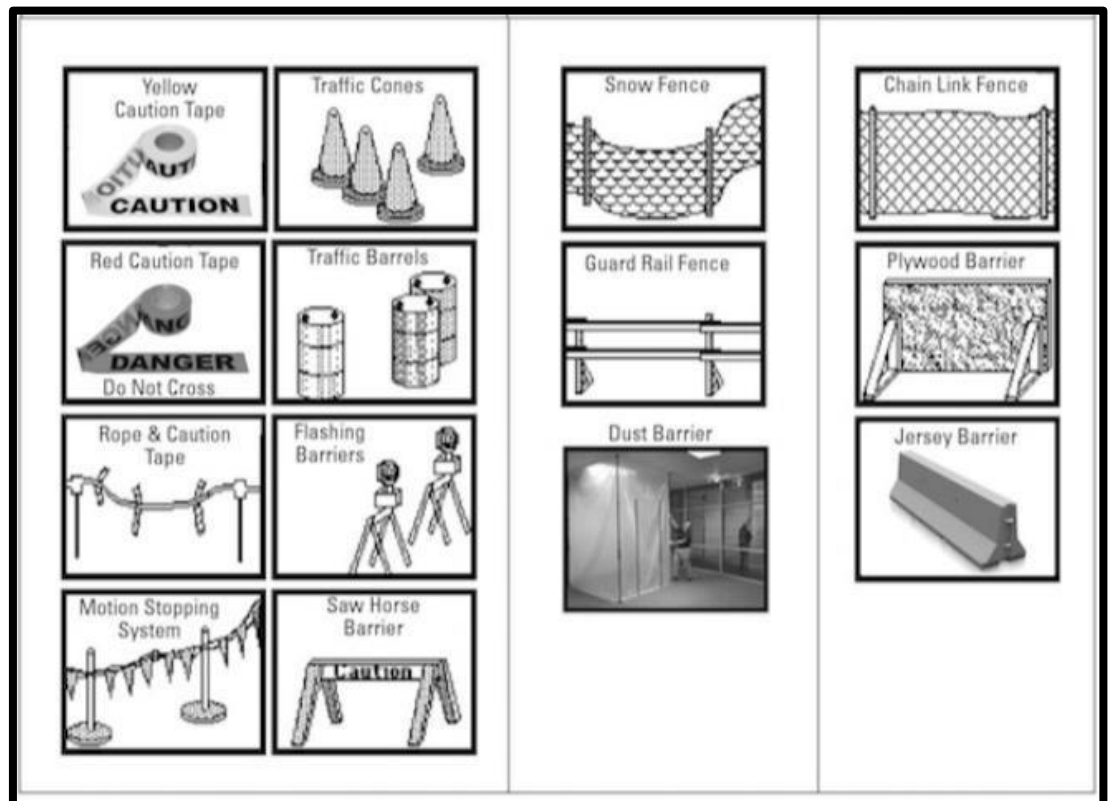




## BARRICADES & WARNING DEVICES

One of the first steps in a construction project is the planning of traffic flow through or around the work areas. Sources of injuries involving the public and the workers include accidental contact with construction equipment, falling into open excavation work, and inadvertent entry into a busy construction zone. Consideration must be taken on each jobsite to ensure safety from hazards including:

- Moving Equipment
- Debris
- Electrical Shocks
- Dust
- Slip Hazards
- Men Working
- Exhaust
- Vapors/Fumes
- Open Holes
- Noise
- Falling Debris
- Traffic
- Trip Hazards
- Trenches



### General Rules

- Give plenty of warning by use of signs
- Ensure that barricades are adequate to protect for hazards present
- Use flagmen on narrow passages, one-way passages, or when construction vehicles will be interacting with the public traffic flow
- Maintain all barricades and signs

**Remember:** There are numerous specific rules for signs, barricades, and warning device usage. It is important we use all types of warning devices. We must protect ourselves and the public around our construction site(s).

Violating a warning device is a safety violation that can lead to disciplinary action.